

## The Position

The Board of Education seeks an exceptional leader and knowledgeable dynamic administrator to assume the role of Superintendent of Schools for the Southwestern Central School District.

The role of the Superintendent is essential to the success of our school district. This educator will continue to foster a community of excellence and acceptance for our students, our staff, and our community stakeholders. We seek a leader who can envision different educational pathways and success for each one of our students. In addition, an administrator with a proven record in improving student outcomes through the implementation of innovative instructional practices and personalized learning initiatives. As the Chief Executive Officer, the Superintendent works intimately with the Board to guide decisions, implement policies, and outline goals, opportunities, and long-term plans.

The focal point for the Superintendent is to provide outstanding leadership to maintain the strongest educational program within the financial capabilities of the community.



## Time Frame for Consideration

- **Application Deadline:** Friday, November 15, 2024
- **Board Begins Review of Files:** December 10, 2024
- **Preliminary Interviews:** Tuesday, January 21, Wednesday, January 22, and Thursday, January 23, 2025
- **Final Interviews:** Monday, February 10, Tuesday, February 11, and Wednesday, February 12, 2025
- **Appointment:** On or about March 15, 2025
- **Assume Duties:** July 1, 2025

## Board of Education

Southwestern Central School District has a dedicated and committed Board of Education that is made up of seven members elected at large:

- Mr. Kurt Gustafson, President
- Dr. Elizabeth Laczi, Vice President
- Mr. Michael Carothers
- Mr. Troy Durnell
- Mr. Josh Gesing
- Mr. Richard Hartmann
- Mr. Correy Miller



## District Financial Information

**2024-25 Approved Budget:** \$35,745,707  
**Full Value Assessment:** \$981,569,263  
**Tax Rate on True Value Per \$1,000:** \$14.621755  
**State Aid:** \$19,142,458  
**Total District Debt:** \$39,188,000



## Applicant Information

The Board of Education has selected Dr. David O'Rourke to assist in the search process. Interested individuals are invited to submit a letter of intent, completed application, resume, college/university credential folder, official transcripts, and three letters of reference by Friday, November 15, 2024, to:

David O'Rourke, Ph.D., District Superintendent  
Erie 2-Chautauqua-Cattaraugus BOCES  
8685 Erie Road  
Angola, NY 14006

**Applicants should not contact members of the Southwestern Board of Education or school district personnel. All inquiries must be directed to Dr. O'Rourke at [dorourke@e2ccb.org](mailto:dorourke@e2ccb.org) or (716) 549-4454, ext. 4029.**

## ANNOUNCEMENT OF VACANCY SUPERINTENDENT OF SCHOOLS



## Southwestern Central School District

Jamestown, New York  
Chautauqua County

**Developing students' potential  
for positive contributions to society  
as self-sustaining individuals**

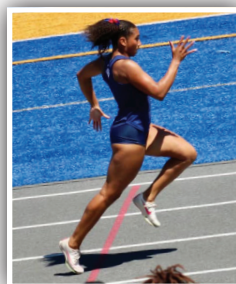
[www.swcsk12.org](http://www.swcsk12.org)

## Candidate Profile

The Southwestern Central School Board of Education seeks a visionary leader who is deeply committed to the success of all students. This outstanding educator will have had clear success bringing together a school community in a shared vision of excellence. They will be an exceptional communicator and advocate for students at local, regional, and state levels. The Board seeks a visible and skilled leader dedicated and demonstrated the following:

1. Pursuit of excellence and innovation within his/her/their job duties and district.
2. Ability to implement collaborative partnerships and drive positive change in education.
3. Brings expertise and enthusiasm to support the mission and vision of a forward-thinking organization as well as elevate the climate and culture of the District.
4. Outstanding career record engaging faculty, staff, and community are encouraged to apply.

Depending upon a candidate's background and experience, the Board is prepared to offer a three-year contract with a salary up to \$190,000 and a commensurate benefit package. Residency within the district, or residency within a reasonable radius from the district, is preferred.



## Athletics

- **Baseball:** Boys Varsity, JV, Modified
- **Basketball:** Boys Varsity, JV, Modified; Girls Varsity, JV, Modified; Coed Unified
- **Bowling:** Boys Varsity; Girls Varsity; Coed Unified
- **Cross Country:** Boys Varsity, Modified; Girls Varsity, Modified
- **Flag Football:** Girls Varsity
- **Football:** Boys Varsity, Modified
- **Golf:** Boys Varsity; Girls Varsity
- **Soccer:** Boys Varsity, Modified; Girls Varsity, Modified
- **Softball:** Girls Varsity, JV, Modified
- **Swimming:** Boys Varsity; Girls Varsity
- **Tennis:** Boys Varsity; Girls Varsity
- **Track:** Boys Varsity, Modified; Girls Varsity, Modified
- **Volleyball:** Girls Varsity, JV, Modified
- **Wrestling:** Boys Varsity, Modified

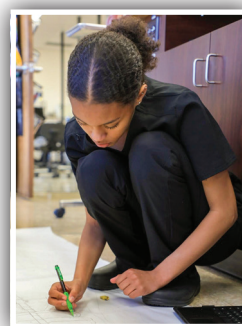
## The School District

Southwestern CSD's shared core purpose, aspirations, and expectations are clear. We envision a community providing a comprehensive and relevant education that enables every student to achieve. Integrity, kindness, connections, excellence, and a positive, supportive culture are priorities for our Trojan family. Our new mission statement, "Learning for ALL: Engaging and Preparing for Future Success," was shaped through extensive collaboration with our Board of Education, Professional Learning Community, DEI Committee, and community members.

Southwestern is distinguished by a well-educated faculty committed to excellence. Employment in the District comprises 149 faculty members and 88 non-instructional personnel serving 1,350 students. There are principals in each of the three schools with an assistant principal in the elementary school and a secondary principal in the high school.



Southwestern is committed to preparing students for success in college and their careers. Students have the opportunity to enroll in a wide range of Advanced Placement courses and participate in the Individual Arts Assessment and New York State Seal of Biliteracy pathways. Through a partnership with SUNY Jamestown Community College, students can take part in more than a dozen college-level courses and earn dual credit at no charge. With the support of Erie 2-Chautauqua-Cattaraugus BOCES within our community, students are offered a variety of career and technical education programs.



The District enjoys strong community support for its academic and extra-curricular programs. Student activities include extensive middle and high school sports programs with modern athletic facilities. Outstanding music and drama offerings take the stage in a renovated auditorium featuring state-of-the-art acoustics and technology. Dynamic STEAM and interactive programming is provided for our students in elementary, middle, and high school.

Family involvement and community support are essential to maintaining an environment for effective learning. There is robust Parent Teacher Organization participation at the elementary and middle levels with active boosters and student support committees at the high school, including the After-Grad Committee.

Download an application  
at [www.swcsc12.org](http://www.swcsc12.org)



## The Community

Southwestern Central School District lies to the west of the city of Jamestown in beautiful Western New York. It encompasses the southern shores of Chautauqua Lake, the villages of Lakewood and Celoron, the suburban neighborhoods of West Ellicott, and rural areas in the Town of Busti. More than 10,000 people reside in the district with an additional 57,000 residents in the surrounding area.



The National Comedy Center, Reg Lenna Center for the Arts, and Lucille Ball Little Theatre provide entertainment year-round along with a number of museums in the area. Service clubs and fraternal organizations are active in the community, and the area is served by SUNY Jamestown Community College. Several four-year institutions of higher education are within an hour's drive.

People who work in professional, business, industrial, and agricultural occupations reside in the district. A hospital and several clinics are in the region. There are many residential areas to fit the needs of residents, and all are located near shopping and business districts, including a mall in Lakewood.

Year-round outdoor recreation abounds throughout the Chautauqua Lake area and the wider region. Hunting and fishing – plus many areas suitable for hiking and horseback riding – add to the fine golf courses, ski resorts, state parks, and the world-famous Chautauqua Institution, which attracts leaders in music, medicine, politics, the press, and religion.

The Southwestern community is within convenient driving distance of Erie, Buffalo, Pittsburgh, Cleveland, and Toronto for sports, cultural activities, and shopping. All of this combines to provide residents with an excellent quality of life for both individual and family living.

